


# Community based eco-tourism in Indawgyi lake

A scenic view of Indawgyi Lake at sunset. In the foreground, several seagulls are in flight, their wings spread wide. The middle ground shows a large, ornate golden pagoda complex on the shore, with its reflection visible in the calm water. The background features a range of mountains under a clear blue sky with a few wispy clouds. The overall atmosphere is peaceful and beautiful.

*Inn Chit Thu (Lovers of Indawgyi)  
Fauna & Flora International (FFI)*



Indawgyi lake – a wetland of both cultural and biodiversity importance

## Biodiversity and Nature Attractions



## Myanmar's most important site for Sarus cranes





Woolly-necked storks

# Cultural Values



# Attractions

- Pagodas and Nat shrines (b&m;ESifh ewfpifrs;)
- Pagoda festival (b&m;yGJawmf)
- Shan cultural festival (&Srf;&ddk;&m,Ofaus;rIyGJawmf)
- Landscape beauty (Indawgyi lake, Shwe Taung, Chaung Wa,He Pu (&Icif;))
- Bird watching (iSufMunfh)

# Inn Chit Thu (Lovers of Indwagyi), Community based eco-tourism group

အမှိုက်မပစ်ရ



Community-based ecotourism



# Group Formation

- Following a village meeting at Lonton a community volunteer group was founded (self-selected interested people) to develop eco-tourism in Indawgyi
- The non-for-profit group was named “Inn Chit Thu” (Lovers of Indawgyi), it’s objectives are to provide eco-tourism services, support the conservation of Indawgyi Lake and the livelihoods of the local communities.
- Profits from eco-tourism are spent on community development projects and environmental conservation



# Activities

- Waste collection, tree planting, plastic awareness, bird tour guide



30.11.15

# Training & support by FFI

- Inn Chit Thu membership rules  
(tif;cspfolzGJU pnf;yHkpnf;rsOf;rsm;)
- English language training (t\*Fvdyfpmoifwef;rsm;)
- Basic first aid training (tajccHa&S;OD;olemjyKoifwef;rsm;)
- Birdwatching guide training (iSufMunfhoifwef;)
- Kayak training (u,ufoifwef;)
- Bookkeeping & financial management  
(b@mxdef;odrf;jcif;ESifhaiGaMu;pDrHcefUcGJjcif;)
- Emergency procedures (ta&;ay:enf;vrf;rsm;)
- Development of tourism products: trekking, cycling and kayaking routes

# INDAWGYI LAKE KAYAKING MAP

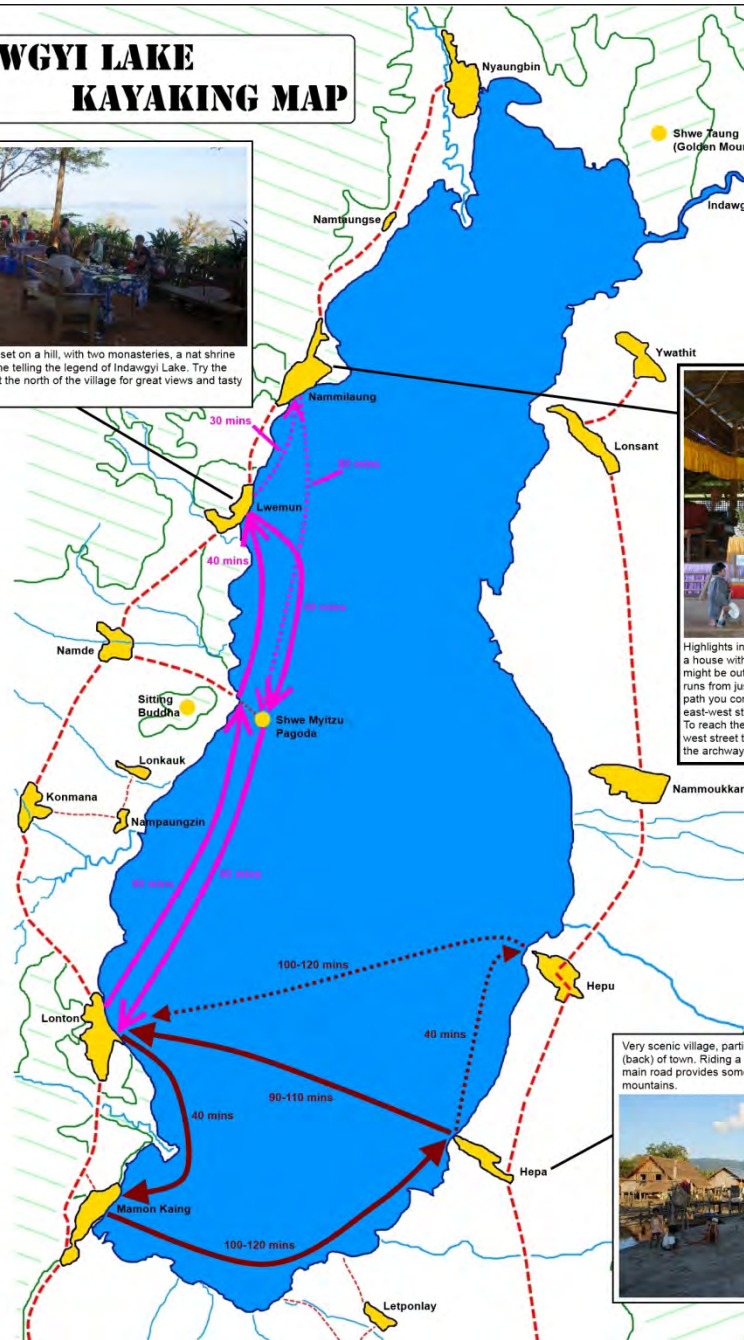
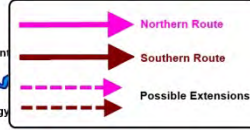


Picturesque village set on a hill, with two monasteries, a nat shrine and a lakeside shrine telling the legend of Indawgyi Lake. Try the roadside teashop at the north of the village for great views and tasty noodle salads.



Highlights include a cane Buddha image, an old teak monastery and a house with elephants. To reach the elephant house (be aware, they might be out working in the forest), head up the east-west street which runs from just north of where you dock, then turn left at the first narrow path you come to. The house is on the corner of this path and the next east-west street (it has an iron gate). To reach the Buddha image and monastery, continue down the east-west street to the main road, then turn right and walk straight towards the archway.

Very scenic village, particularly at the lakefront and at the very east (back) of town. Riding a little north or south of the village along the main road provides some lovely scenery of field rolling towards the mountains.



# INDAWGYI LAKE CYCLING MAP



Picturesque village set on a hill, with two monasteries, a nat shrine and a lakeside shrine telling the legend of Indawgyi Lake. Try the roadside leashop at the north of the village for great views and tasty noodle salads.



Highlights include a cane Buddha image, an old teak monastery and a house where you might see elephants (when they're not out working in the forest). The cane Buddha image and monastery are on the main north-south road, next to the archway and just before the archway, respectively. The elephant house is on the fourth east-west street south of the cane Buddha complex. Go down this street, towards the lake. The house is on the corner with a narrow path and has an iron fence.

There is a house where you might see elephants (if they're not out working). It is two houses south of the turn-off to Shwe Myitzu Pagoda (which is signed in English).

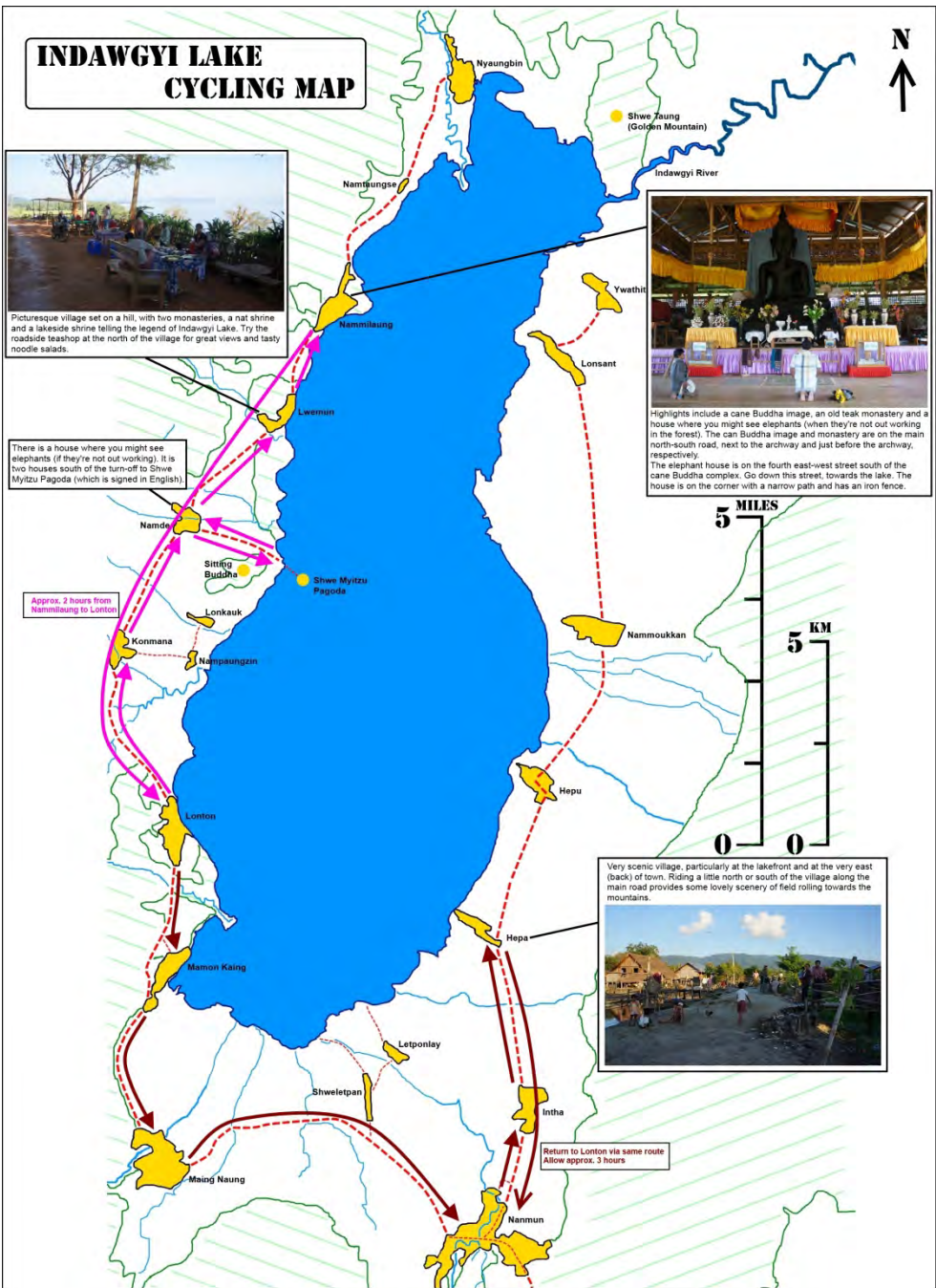
Approx. 2 hours from Nantungse to Lonton



Very scenic village, particularly at the lakefront and at the very east (back) of town. Riding a little north or south of the village along the main road provides some lovely scenery of field rolling towards the mountains.



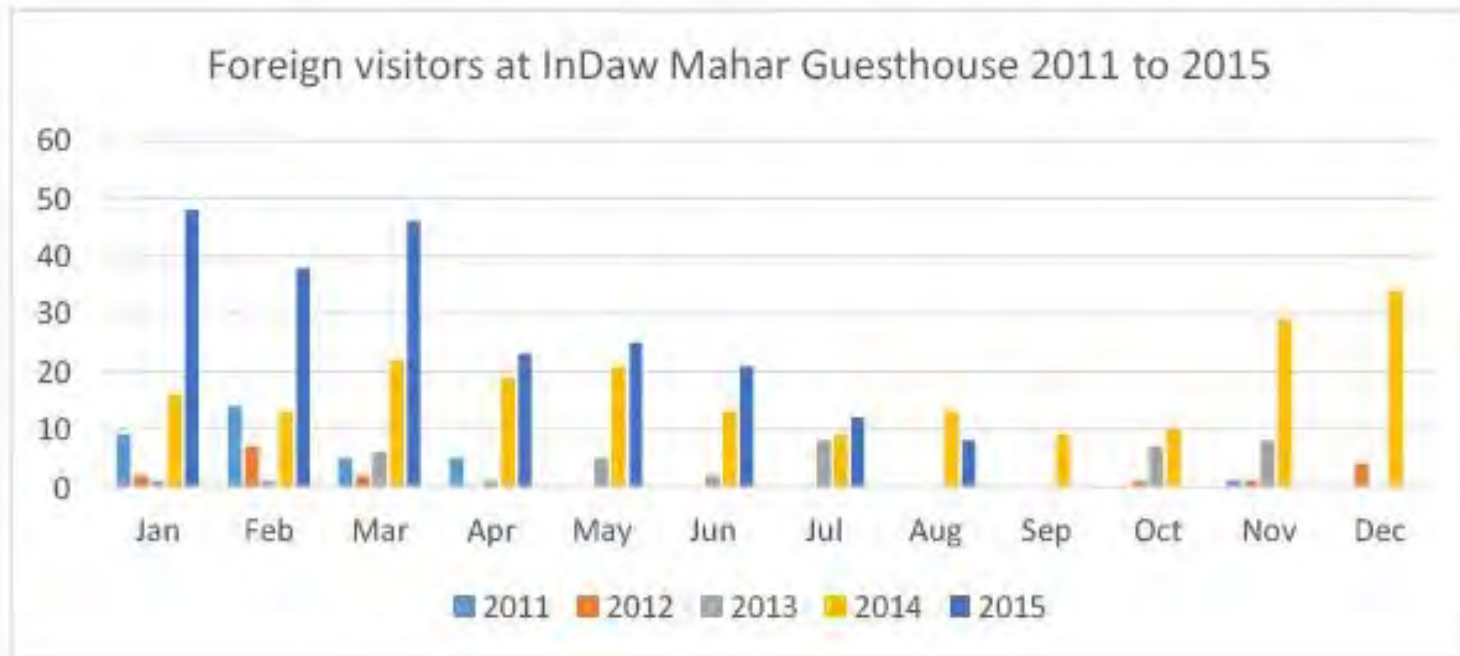
Return to Lonton via same route. Allow approx. 3 hours



# Benefits for the Community

- Increase in average length of stay of tourists and increased tourist arrivals resulted in more money spent at local shops and restaurants and for motorboat/ motorbike rental in Lonton village





Main season October to March (all year tourism)

Average stay increased from 2 (2013) to 3 (2015) days

Domestic pilgrims 30,000 to 100,000

# Ecotourism support



Promotion &  
information material  
Visitor map  
Bird field guides  
Information sheets on activities and  
attractions

## Training & Equipment

Birdwatching training  
English training  
Kayaks  
Bikes  
Binoculars, Field Guides



Development of packages and activities  
Promotion to local and international tour operators



Indawgyi Label &  
Merchandising  
Indawgyi Logo  
T-shirts, buttons, stickers



# Visitor interpretation & environmental education

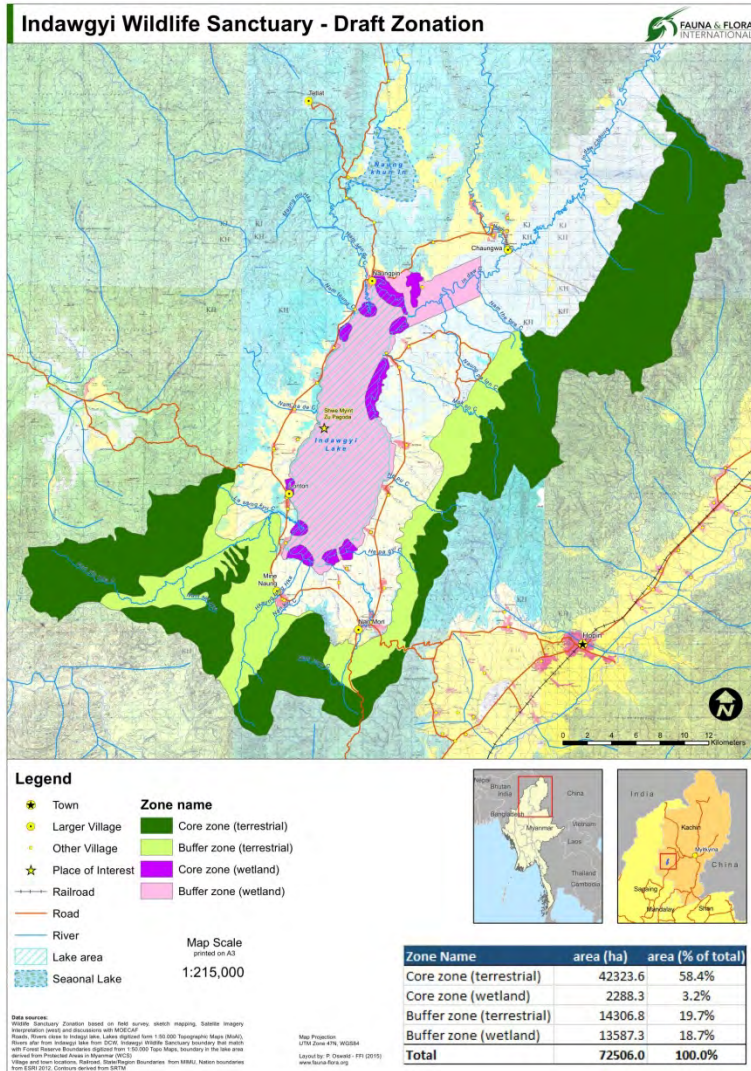
- Visitor center
- Nature trails
- Nature signs



Design example from Biosphere Reserve Spreewald, Germany



# Future activities



- Incorporation of all tourism Activities in:  
Indawgyi Wildlife Sanctuary  
UNESCO Biosphere Reserve  
& Ramsar Site management plans
- Development of bed & breakfast  
(only 1 guesthouse)